

HULLABALOO'S

Greens Prairie Road W

Creek Meadows
Development
750+ Single
Family lots

I & GN Road

Wellborn Road (Highway 2154)

Wellborn Middle
School

Royder
Subdiv

Greens Prairie Trail

Greens Prairie
Elementary School

Pecan Trail
Intermediate School

FOR SALE

Commercial Land in Creek Meadows Development

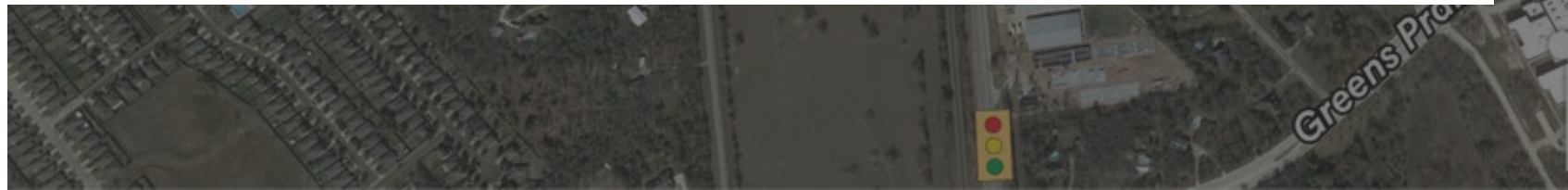
Greens Prairie Trail & Creek Meadows
Boulevard
College Station, TX 77845

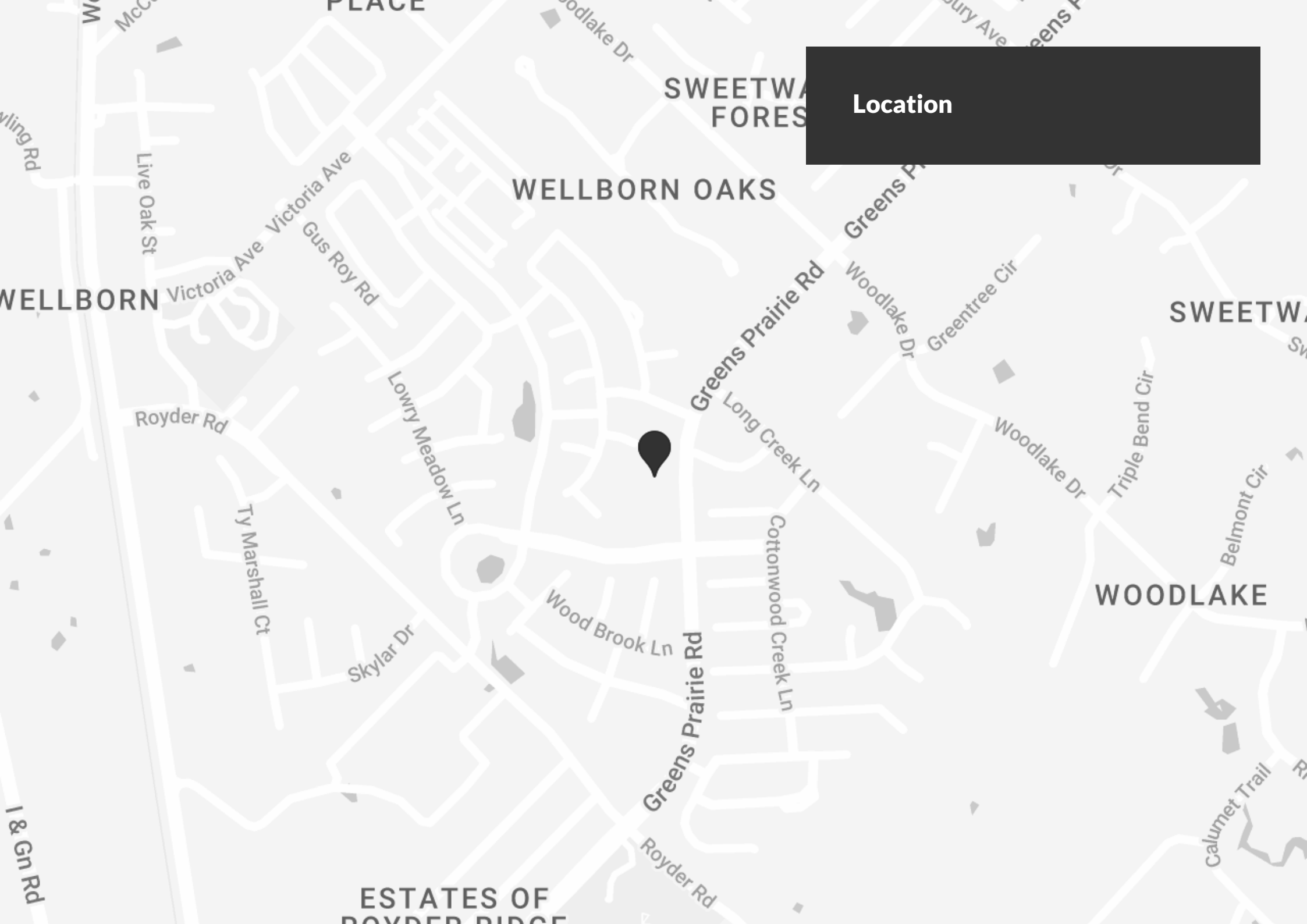
Oldham
Goodwin **OG**

Large commercial tracts ready for immediate development. Located within Creek Meadows master planned community . Situated in close proximity to Greens Prairie Elementary as well as Pecan Ridge Intermediate and Middle School. Quick access to FM 2154 (Wellborn Road) and Highway 40 (William D. Fitch Parkway). Greens Prairie Trail improved to four lane divided roadway with curbs and gutters, and left and right turn lanes.

Property Information

- Size: 5.65 AC; 4.26 AC
- Legal Description: Lot 1, Block 1, Phase 1, Creek Meadows Section 1 B Lot 1, Block 1, Phase 2, Creek Meadows Section 3
- Access: Greens Prairie Trail & North Creek Meadows Boulevard
- Frontage: ~830 Feet on Greens Prairie Trail; ~800 Feet on Greens Prairie Trail
- Zoning: PDD; Planned Development District
- All utilities available
- No flood plain





Location

WELLBORN OAKS

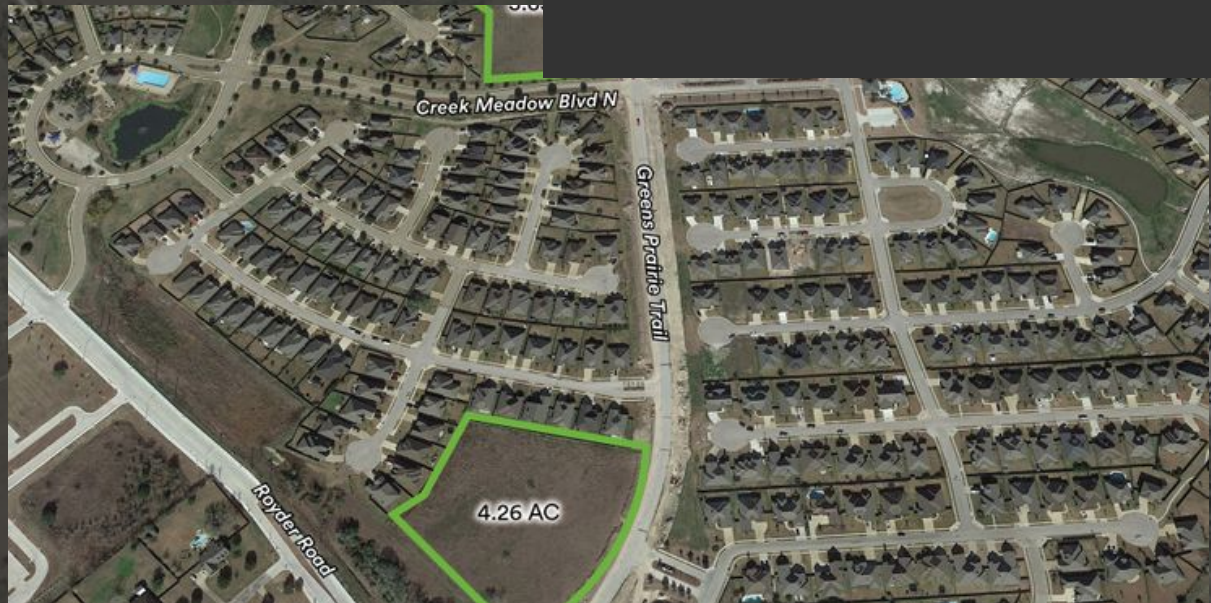
WELLBORN

SWEETWA

WOODLAKE

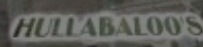
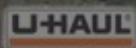
ESTATES OF
ROYDER RIDGE

Photo Gallery



Creek Meadows Development
750+ Single Family lots





Greens Prairie Road W

Wellborn

Castlegate II

Woodla
Subdivis

Creek Meadows
Development
750+ Single
Family lots

Availability

5.65 AC
6AC

SITE
5.65 AC





Sales



Jeremy Richmond

Managing Director | Land Services
jeremy.richmond@oldhamgoodwin.com
O: (979) 268-2000
D: (979) 977-6096

Address

2800 South Texas Avenue, Suite
401. Bryan, Texas 77802

Phone

(979) 268-2000

Fax

(979) 846-7020

